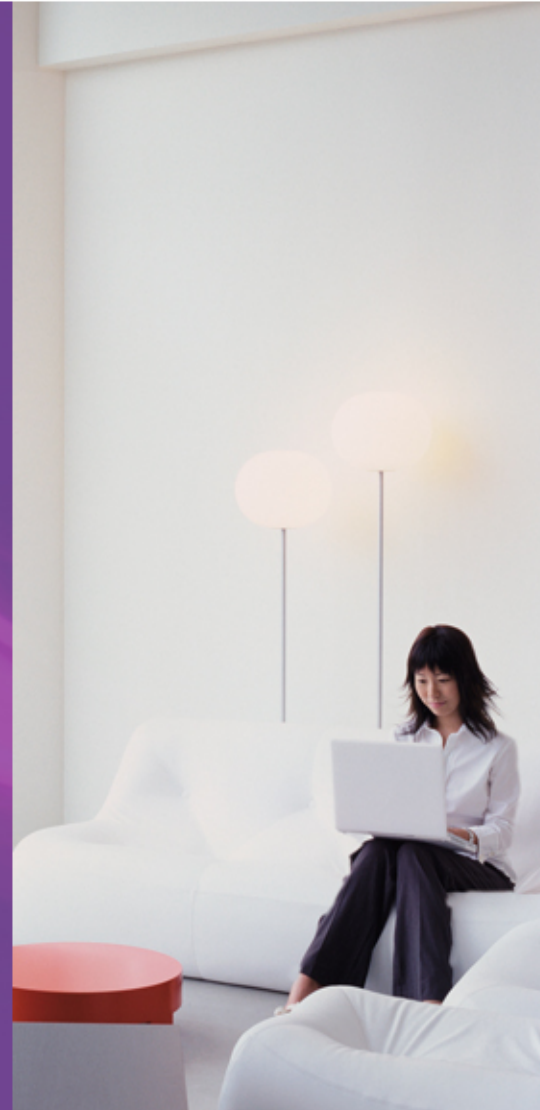


Alcatel-Lucent OpenTouch Suite for SMB

Q4 2013

OmniPCX Office RCE
Cross compatibility



Alcatel-Lucent OpenTouch Suite for SMBs

HISTORY 2

Introduction.....	3
SMB Products phase In / phase Out	4
Boards Compatibility.....	8
OmniPCX Office & applications compatibility.....	10
OmniPCX Office & phones compatibility.....	26

HISTORY

Edition	date	Author	Comment
Ed1	Sept 28 th 2010	B.Magnin	Creation for OXO RCE R8.0
Ed2	Dec 6 th 2010	B.Magnin	Update for: Outlook 2010 Boards compatibility
ED3	Oct 27 th 2011	B.Magnin	- Update for OXO RCE R8.1 - My IC applications added - SIP phone added
ED4	May 31 th 2012	B.Magnin	- Update for OXO RCE R8.2
ED5	June 29 th 2012	B.Magnin	- correction for myIC Phone - correction for 500Dect - addition of Fax RCE
ED6	Oct 19 th 2012	B.Magnin	- Update for OXO RCE R9.0
ED7	Dec 24 th 2012	B.Magnin	- change solution name : OpenTouch Suite for SMB
ED8	Feb 28 th 2013	B.Magnin	- Update for OXO RCE R9.1
ED9	May 28 th 2013	B.Magnin	- Precisions on software versions after DR4 - retro compatibility of 8232 Dect
ED10	Sept 27 th 2013	B.Magnin	- Update for OXO RCE R9.2 - Precisions about OLD driver

Introduction

Purpose of the document

This document is describing compatibility between OmniPCX Office RCE Releases and its applications (like PIMPhony, Call center, MyIC Applications, ...), and the wired and wireless terminals.

Information given in this documentation is provided only for products that are still supported.

First chapter gives the history of OmniPCX Office RCE and Extended Communication Server phase-in / phase out.

Wording precision: each time the label "Windows 7" is used in this doc, it means Windows 7 professional edition.

SMB Products phase In / phase Out

OmniPCX Office

OmniPCX Office R1.x

This version has been phased-out the 1st of May, 2005, and is at end of life.
Do not upgrade existing configurations to this earlier software release
Compatibility data will no longer be maintained for these versions.
This document does not include any information regarding this release.

OmniPCX Office R2.x

This version has been phased-out the 26th of April, 2006, and is at end of life.
No customer configurations should be upgraded to this release.
Compatibility data will no longer be maintained for these versions.
This document does not include any information regarding this release.

OmniPCX Office R3.0

OmniPCX Office R3.0 has been phased-out the 1st of October, 2006
This version is at end of life as of 1st October 2007
No customer configurations should be upgraded to this release.
This document does not include any information regarding this release.

OmniPCX Office R3.1

OmniPCX Office R3.1 has been phased-out the 1st of October, 2006
This version is at end of life as of 1st October, 2007
No customer configurations should be upgraded to this release.

OmniPCX Office R4.0

OmniPCX Office R4.0 has been phased-in the 2nd of May, 2005
This version is a major version regarding the OmniPCX Office R3.x

This version has been phased-out the 8th July, 2007.
No customer configurations should be upgraded to this release.

OmniPCX Office R4.1

OmniPCX Office R4.1 has been phased-in the 7th of November, 2005
This version is a minor and maintenance version of OmniPCX Office R4.0

This version has been phased-out the 8th July 2007.
No customer configurations should be upgraded to this release.

OmniPCX Office R5.0

OmniPCX Office R6.0 has been phased-in the 29th of May, 2006
This version is a major version regarding the OmniPCX Office R4.x

This version has been phased-out the 19th December 2008, and is at end of life.
No customer configurations should be upgraded to this release.

OmniPCX Office R5.1

OmniPCX Office R5.1 has been phased-in in the 30th of October, 2006
This version is a minor and maintenance version of OmniPCX Office R5.0

This version has been phased-out the 19th December 2008, and is at end of life.
No customer configurations should be upgraded to this release.

OmniPCX Office R6.0

OmniPCX Office R6.0 has been phased-in in the 30th of April, 2007
This version is a major version regarding the OmniPCX Office R5.x

This version has been phased-out the 18th December 2009, and is at end of life
No customer configurations should be upgraded to this release.

OmniPCX Office R6.1

OmniPCX Office R6.1 has been phased-in in the 29th of October, 2007
This version is a minor and maintenance version of OmniPCX Office R6.0

This version has been phased-out the 18th December 2009, and is at end of life
No customer configurations should be upgraded to this release.

OmniPCX Office R7.0

OmniPCX Office R7.0 has been phased-in in the 28th of April, 2008
This version is a major version regarding the OmniPCX Office R6.x

This version has been phased-out in April 2010, and is at end of life
No customer configurations should be upgraded to this release.

OmniPCX Office R7.1

OmniPCX Office R7.1 has been phased-in in the 27th of April, 2009
This version is a minor and maintenance version of OmniPCX Office R7.0

This version has been phased-out in April 2011, and is end of life from April 2012.
No customer configurations should be upgraded to this release.

OmniPCX Office R7.1.1

OmniPCX Office R7.1.1 has been phased-in in the November 2009
This version is a minor and maintenance version of OmniPCX Office R7.1

This version has been phased-out in December 2011 and is end of life from December 2012
No customer configurations should be upgraded to this release.

OmniPCX Office R7.1.2

OmniPCX Office R7.1.2 has been phased-in in the 4th June , 2010
This version is a minor and maintenance version of OmniPCX Office R7.1.1

This version has been phased-out in Dec 2012. From this date, no customer configurations should be upgraded to this release.
From Dec 2013, OmniPCX Office release 7.X will be end of life without any support.
Except for Belgacom : end of life dec 2015.

OmniPCX Office RCE R8

OmniPCX Office RCE R8.0

OmniPCX Office RCE R8.0 phase-in in November 2010
This version is a major version regarding the OmniPCX Office R7.x

OmniPCX Office RCE R8.1

OmniPCX Office RCE R8.1 phase-in in November 2011
This version introduces a lot of innovations: MyIC family, SIP openness, Mobility.

OmniPCX Office RCE R8.2

OmniPCX Office RCE R8.2 phase-in on July 2nd 2012

This version introduces innovations for Mobility (My IC Mobile Android, 8232Dect) , and enriched user experience and security.

RCE 8.X will be phased-out in July 2014 and will be at end of life in July 2015.

OmniPCX Office RCE R9

OmniPCX Office RCE R9.0

OmniPCX Office RCE R9.0 phase-in in December 2012

This version is a major version regarding the OmniPCX Office RCE R8.x

This version introduces innovations for full IP deployment (IP-Dect) including extension of SIP limits, for Enriched user experience (My IC Social Networks, My IC Web - call control-, Groupware supervision and Manager/Assistant), for Enriched call distribution (Smart Call Routing) and for SIP carrier demands.

OmniPCX Office RCE R9.1

OmniPCX Office RCE R9.1 phase-in on May 6th 2013 (version R910/21.1)

This version introduces innovations for Mobility (MIC Mobile iPhone: SIP enabled, Android: call log & Voice mail enriched, switch call from mobile to deskphone); ACD (automatic agent connection); Serviceability (Zero touch, password security, OV8770, Wind8); SIP trunking continuous evolutions.

OmniPCX Office RCE R9.2

OmniPCX Office RCE R9.2 phase-in on Nov 4th 2013

This version introduces innovations for inside Mobility: IP-Dect (mixture, new AP 8340, new topologies), for SIP trunking (multi Sip registrations, enhancements) and OTOC evolutions.

Eyebox and Extended Communications Server

Eyebox R3.14

Eyebox R3.14 has been phased-in in the 31st of October, 2005

This version has been phased-out the 06th February 2009.

Eyebox R4.0

Eyebox R4.0 has been phased-in in the 2nd of October, 2006

This version is a major version regarding the Eyebox R3.14

Extended Communications Server R4.0.1

Extended Communications Server R4.0.1 has been phased-in in the 30th of April, 2007
This version is a maintenance version regarding the Eyebox R4.0

Extended Communications Server R4.1

Extended Communications Server R4.1 has been phased-in in the 28th of April, 2008
This version is a maintenance version regarding the ECS R4.0.1

Extended Communications Server R4.2

Extended Communications Server R4.2 has been phased-in in June 2010
This version is a maintenance version regarding the ECS R4.X

Extended Communications Server R4.2.1

Extended Communications Server R4.2 has been phased-in in November 2010
This version is a maintenance version regarding the ECS R4.X

ECS has been phased out in Dec 2012

From December 2013, ECS will be end of life without any support.

Boards Compatibility

Legend

	Compatible
	Not compatible
(*1) version R3.1 only	

	Alcatel-Lucent OmniPCX Office RCE						
	R1.x	R2.0	R2.1	R3.x	R4.x	R5.x/6.x/7.x	R8.x/R9.x
CPU	x	x	x	x	x		
CPU-1	x	x	x	x	x	x	
CPU-2				x	x	x	
CPU-3, 3m, 4			x	x	x	x	
CPUE	x						
CPUE-1		x	x	x	x	x	
CPUE-2				x	x	x	
CoCPU	x	x	x	x	x		
CoCPU-1	x	x	x	x	x	x	
CoCPU-2				x	x	x	
CoCPU-@	x						
PowerCPU							x
MEX	x	x	x	x	x	x	
PowerMEX							x
Xmem64	x	x	x	x	x		
Xmem64-1	x	x	x	x	x		
Xmem128-1			x	x	x	x	
AFU	x	x	x	x	x	x	x
AFU-1	x	x	x	x	x	x	x
Voice HD 10Gb	x	x	x				
Data HD 10 Gb	x						
HD 20 Gb		x	x	x	x	x	
HD 40 Gb			x	x	x	x	
SATA 160Gb				x	x	x	x
WAN	x	x	x	x	x	x	
SLANX4	x	x	x	x	x	x	
HSL1/HSL2	x	x	x	x	x	x	x
VOIP4/8/16 VOIPx-1	x	x	x	x	x	x	
VOIPx-2					x	x	
VOIP32							x
UA14/8/16, UA16-1	x	x	x	x	x	x	x
SLI4/8/16	x	x	x	x	x	x	x
SLI-1			x	x	x	x	x
SLI-2				x	x	x	x
LANX-1, LANX-2	x	x	x	x	x	x	x
MIXx/y/-1z	x	x	x	x	x	x	x
MIX 2/4/4 4/8/4 4/4/8				x	x	x	x
MIX-2 2/4/4 4/8/4 4/4/8						x	x
Mini Mix						x	x
AMIXx/y/-1z				x (*1)	x	x	x
APA4/8		x	x	x	x	x	x
ATA2/4	x	x	x	x	x	x	x
DDI2/4			x	x	x	x	x
MET	x	x	x	x	x	x	x
PRA/T2/T1/DASS2	x	x	x	x	x	x	x
PCM R2			x	x	x	x	x
BRA 2/4/8	x	x	x	x	x	x	x
BRA-2 2/4						x	x

OmniPCX Office & applications compatibility

The following chart provides the application release compatibility for each OmniPCX software release. Prior to upgrade your OmniPCX software release make sure you have verified applications compatibility table below.

Minimum application release assumes that when migrating an OmniPCX Office r “x” to OmniPCX Office r “y”, services available on the target configuration will be at the level that was available before migration. Careful analysis must be performed when supplementary services are required on target configurations. Such requirements may imply application migration to a more recent release.

Note that it is strongly recommended to upgrade applications to the latest software release. By doing so, customers benefit from feature and application improvements. This information conforms with the phase-out policy.

MyIC APPLICATIONS

My IC MOBILE compatibility

My IC MOBILE				
	OmniPCX Office =< R8.0	OmniPCX Office R8.1	OmniPCX Office R8.2/R9.0	OmniPCX Office R9.1/R9.2
Iphone MyIC 1.1	Not supported	Yes	Yes	Yes
Iphone MyIC 2.X	Not supported	Yes w/o SIP	Yes w/o SIP	Yes with SIP
Android MyIC 4.X	Not supported	Not supported	Yes	Yes

My IC MOBILE for iPhone				
	IOS 4.X	IOS 5.X	IOS 6.X	IOS 7.X
My IC Mobile 1.1 (from IOS 4.2)	Yes on 3G	Yes on 3GS, 4, 4S	Yes On 3GS, 4, 4S, 5	Phased-out
My IC Mobile 2.0 (from IOS 4.3)	Yes on 3G	Yes on 3GS, 4, 4S	Yes On 3GS, 4, 4S, 5	Phased-out
My IC Mobile 2.1 (from IOS 4.3)	Yes on 3G	Yes on 3GS, 4, 4S	Yes On 3GS, 4, 4S, 5	Yes On 4,4S, 5,5C,5S

MIC Mobile iPhone application is available on App store.

MIC iPhone 1.1 has been delivered with OmniPCX Office R8.1

MIC iPhone 1.1.13 has been delivered with OmniPCX Office R9.1

MIC iPhone 2.0.8 (Sip companion) has been delivered in Aug 2013 with R9.1 MR.

MIC iPhone 2.1.2 is the first version compatible with IOS7

MIC iPhone 2.1.4 will be delivered with R9.2

Note: My IC Mobile compatibility with IOS 4.X & IOS 5.X will be phased-out with next release R9.2MR in Q2.2014

My IC MOBILE for Android smartphone			
	Android < 2.2	Android 2.2 / 2.3	Android 4.0 -> 4.3
My IC Mobile 4.X	Not supported	Yes	Yes

MIC Mobile Android application is available on Google play.

MIC Android 4.1 has been delivered with OmniPCX Office R8.2

MIC Android 4.2 has been delivered with OmniPCX Office R9.1 (version 4.2-2.0.31.4)

MIC Android 4.3 will be delivered with OmniPCX Office R9.2

Version 4.3-2.0.33.1 is the available version at R9.2 commercial release.

MIC Android is only for smartphone Android. For device white list: see document 8AL90822AAAA >= ed14

Or on BPWS: <https://businessportal.alcatel-lucent.com/alugesdp/content?ID=mkt9a816>

My IC WEB for OFFICE compatibility

My IC WEB for OFFICE				
	OmniPCX Office < R8.0	OmniPCX Office R8.0	OmniPCX Office R8.1-R8.2	OmniPCX Office R9.X
My IC Web	Not supported	Not supported	Yes	Yes
Call control in My IC Web	Not supported	Not supported	Not supported	Yes

My IC WEB for OFFICE			
	Safari	Firefox	IE
My IC Web	>= 5.0	>= 4.0	>= 7.0

My IC SOCIAL NETWORKS

My IC Social Networks			
	OmniPCX Office < R8.0	OmniPCX Office R8.X	OmniPCX Office R9.X
My IC SN 3.X	Not supported	Not supported	Yes

My IC Social Networks					
Outlook (32 bits) versions	Yes	2003	2007	2010	2013
My IC SN 3.0-3.1	Not supported	Yes	Yes	Yes	No
My IC SN 3.2	Not supported	Yes	Yes	Yes	Yes

Note: MIC SN is compatible with Exchange 2003, 2007, 2010, 2013

My IC Social Networks					
	Win XP SP3	Vista SP2 32/64	Win 7 32/64	Win 8 32/64	Win 2012 srv
MIC SN 3.0	Y	Y	Y	N	N
MIC SN 3.1	Y	Y	Y	Y	Y
MIC SN 3.2	Y	Y	Y	Y	Y

Note: MIC SN is NOT COMPATIBLE Win 8 RT

MIC SN 3.0 has been delivered with OmniPCX Office R9.0 (version 3.0.0.3769 in January 2013)

MIC SN is delivered with TSP >= 6.6.2711

MIC SN 3.1 has been delivered with OmniPCX Office R9.1 (version 3.1.0.3934)

MIC SN 3.2 will be delivered with OmniPCX Office R9.2 (version 3.2.0.4138)

PIMphony

OmniPCX Office compatibility

PIMphony						
OmniPCX Office Versions:	< R5.0	R5.x	R6.x	R7.x	R8.x	R9.x
PIMphony and IP PIMphony						
PIMphony R6.0/R6.1	Not supported	Y	Not supported	Not supported	Not supported	Not supported
PIMphony R6.2	Not supported	Y	Y	Not supported	Not supported	Not supported
PIMphony R6.3	Not supported	Y	Y	Y	Not supported	Not supported
PIMphony R6.4/R6.5	Not supported	Y	Y	Y	Y	Not supported
PIMphony R6.6/R6.7	Not supported	Y	Y	Y	Y	Y

Notes:

- PIMphony R6.0 has been delivered with OmniPCX Office R5.0
- PIMphony R6.2 has been delivered with OmniPCX Office R6.0
- PIMphony R6.3 has been delivered with OmniPCX Office R7.0
- PIMphony R6.4 has been delivered with OmniPCX Office R8.1
- PIMphony R6.5 has been delivered with OmniPCX Office R8.2
 - ➔ Password 6 digits is supported from this version.
- PIMphony R6.6 has been delivered with OmniPCX Office R9.0
- PIMphony R6.7 has been delivered with OmniPCX Office R9.1 (version R6.7/2925)
- PIMphony R6.7 has been delivered with OmniPCX Office R9.2 (version R6.7/2945)

Windows compatibility

PIMphony							
Windows versions	XP-SP1/2/3 32 bits	XP-SP1/2/3 64 bits	Vista SP1/2 32 bits	Vista SP1/2 64 bits	Win 7 32/64 SP1	Win 8 32/64	Win 8 RT
PIMphony							
PIMphony R6.0/R6.1	Yes	No	No	No	No	No	No
PIMphony R6.2	Yes	No	Yes	No	No	No	No
PIMphony R6.3/6.4/6.5/6.6	Yes	Yes	Yes	Yes	Yes	No	No
PIMphony R6.7	Yes	Yes	Yes	Yes	Yes	Yes	No
IP PIMphony							
PIMphony R5.1	Yes	No	No	No	No	No	No
PIMphony R6.0/R6.1	Yes	No	No	No	No	No	No
PIMphony R6.2	Yes	No	No	No	No	No	No
PIMphony R6.3/6.4/6.5/6.6	Yes	No	Yes	No	Yes	No	No
PIMphony R6.7	Yes	No	Yes	No	Yes	Yes	No

PIMphony						
Windows versions	NT 4	2000 SP4	Server 2000 SP4 2003 SP2 2003 R2 SP2	Server 2008 32/64 & R2	2008 TSE SP2 32 2008 R2 SP1 64	Server 2012 64b RDS
PIMphony						
PIMphony R6.0/R6.1	No	Yes	Yes	No	No	No
PIMphony R6.2	No	Yes	Yes	No	No	No
PIMphony R6.3/6.4/6.5/6.6	No	Yes	Yes	Yes	Yes	No
PIMphony R6.7	No	Yes	Yes	Yes	Yes	Yes
IP PIMphony						
PIMphony R6.0/R6.1	No	Yes	No	No	No	No
PIMphony R6.2	No	Yes	No	No	No	No
PIMphony R6.3/6.4/6.5/6.6	No	Yes	No	No	No	No
PIMphony R6.7	No	Yes	No	No	No	No

Notes:

TSP & SPI compatibility

TSP - SPI for Microsoft TAPI server						
Windows client	2000 pro SP4	XP SP3 32 bits	Vista 32 bits	Vista 64 bits	Win 7 32/64 SP1	Win 8 32/64
TSP	Yes	Yes	Yes	No	Yes	Yes
Windows server	2000 Server SP4	2003 SP2 server & R2	2008 TSE SP2 32b	2008 R2 TSE SP1 64b	2012 Server 64b	
SPI for TAPI server	Yes	Yes	Yes	Yes	Yes	

Notes:

- TSP delivered with PIM6.5 support 64bits
- TSP version 6.6.2710 has been delivered with OmniPCX Office R9.0.
- TSP version 6.7 has been delivered with OmniPCX Office R9.1 & R9.2

Applications compatibility

Integration with Microsoft Outlook	PIMphony	PIMPhony IP
Outlook 2000 / 2003	Yes	Yes
Outlook 2003 with Business contact	Yes	Yes
Outlook 2007	Yes	Yes
Outlook 2010 (32bits and 64bits)	Yes	Yes
Integration with Microsoft Access		
Access 2000 / 2002/2003	Yes	Yes
Access 2007	Yes	Yes
Access 2010 (32 bits)	Yes	Yes
Integration with Goldmine		
Goldmine 5.7 & 6.5 & 6.7	Yes	Yes
Goldmine corporate Edition 7.0 & 7.5	Yes	Yes
Goldmine Premium 8.0 & 8.5	Yes	Yes
Goldmine Premium 9.0 & 9.2	Yes	Yes
Integration with Lotus Notes		
Lotus Notes 5.02 to 6.5	Yes	Yes
Lotus Notes 8.0 & 8.5 & 8.5.3	Yes	Yes
Integration with Act		
Act! 6.0, 8.0, 9.0 & 10	Yes	Yes
Act! 11 (2009) Act! 12 (2010) Act! 13 (2011)	Yes	Yes
Act! 14 (2012) & Act! 15 (2013)	Yes	Yes

OMC

OmniPCX Office compatibility

OmniPCX Office versions	R7.x	R8.x	R9.0	R9.1	R9.2
OMC R7.x	Y	Not supported	Not supported	Not supported	Not supported
OMC R8.x	Y	Y	Not supported	Not supported	Not supported
OMC R9.0	Y	Y	Y	Not supported	Not supported
OMC R9.1	Y	Y	Y	Y	Not supported
OMC R9.2	Y	Y	Y	Y	Y

Notes:

- PM5 is no longer supported / OMC support all OXO versions (from R1.0)
- OMC R9.2 will be delivered with OmniPCX Office R9.2 (version OMC920/9.1a & AST 2.1./1.1 & DBAdapter 2.2 build 2.0)

OMC Windows compatibility

	2003 SP2 Server & R2	XP SP2/3	Vista 32/64 bits SP1/2	Win 7 32/64 bits SP1	Server 2008 SP2, TSE, R2 SP1	Win 8 32/64	Server 2012
OMC R6.x	Yes	Yes	No	No	No	No	No
OMC R7.x	Yes	Yes	Yes	Yes	No	No	No
OMC R8.x R9.0	Yes	Yes	Yes(*)	Yes(*)	Yes(*)	No	No
OMC R9.1	Yes	Yes	Yes(*)	Yes(*)	Yes(*)	Yes(*)	Yes(*)
OMC R9.2	Yes	Yes	Yes	Yes	Yes	Yes	Yes

Note:

- (*) restrictions applies including Certificate exportation and DAP management (IP-Dect) requires PC admin right for execution of version below R910/21.1a. (See technical release-note).
- OMC R9.x is not supported on Win8 RT

LOLA Windows compatibility

OMC								
	2000	2003 Server SP2	XP-SP3	Vista 32/64	Win 7 32/64	2008 TSE & Server	Win 8 32/64	Server 2012
LOLA R400	No	Yes	Yes	Yes	Yes	No	From 9.1	From 9.1

Notes:

- Lola R400/8.1 from OmniPCX RCE R8.2
- Lola R400/9.1 from OmniPCX RCE R9.0
- Lola R400/11.1 from OmniPCX RCE R9.1 and for OmniPCX RCE R9.2

OmniTouch Call Center Office

OmniPCX Office compatibility

OmniTouch Call Center Office				
Agent assistant, Supervisor Console				
	OmniPCX Office R3.1/R4.x	OmniPCX Office R5.x	OmniPCX Office R6.x/R7.x	OmniPCX Office R8.x/R9.x
ACD R2 R3, R4 & R5	Y	Y	Y	N
ACD R6 & R7	Y	Y	Y	Y
ACD R8	Y	Y	Y	Y
ACD R9.X	Y	Y	Y	Y

Notes:

- ACD R5 has been delivered with OmniPCX Office R7.1
- ACD R6 has been delivered with OmniPCX Office R8.0
- ACD R7 has been delivered with OmniPCX Office R8.1
- ACD R8 has been delivered with OmniPCX Office R8.2
- ACD R9.1 has been delivered with OmniPCX Office R9.0
- ACD R9.50 has been delivered with OmniPCX Office R9.1
- ACD R9.55 has been delivered with OmniPCX Office R9.2 (version ACD 9.55.1 & MLAA 9.51.1)

OmniTouch Call Center Office				
Statistics monitoring				
	OmniPCX Office R4.x	OmniPCX Office R5.x	OmniPCX Office R6.x/R7.x	OmniPCX Office R8.x/R9.x
ACD R2	Y	Y	Not supported *	N
ACD R3, R4 & R5	Y	Y	Y	N
ACD R6 & R7	Y	Y	Y	Y
ACD R8	Y	Y	Y	Y
ACD R9.X	Y	Y	Y	Y

Notes:

- (*) Statistic monitoring from ACD R2 has to be upgraded to R4 when the system is upgraded to OmniPCX Office R6.x or R7.0
- ACD R9.1 provides SCR (Smart Call Routing) feature.

Windows compatibility

OmniTouch Call Center Office								
Agent assistant, Supervisor Console, Statistic monitoring								
	2000 SP4	Server 2003	XP-SP3	Vista 32b SP2	Win 7 32/64b SP1	2008 & R2 32/64b SP1	Win 8 32/64	Server 2012
ACD R2	Yes	Yes	Yes	No	No	No	No	No
ACD R3	Yes	Yes	Yes	No	No	No	No	No
ACD R4	Yes	Yes	Yes	Yes	No	No	No	No
ACD R5 & R6	Yes	Yes	Yes	Yes	Yes	Yes	No	No
ACD R7 & R8 & R9.1	Not supported	Yes	Yes	Yes	Yes	Yes	No	No
ACD R9.5X	Not Supported	Yes	Yes	Yes	Yes	Yes	Yes	Yes

My Teamwork (phased-out and end of support from nov 2012 for SMB)

OmniPCX Office compatibility

My Teamwork Office						
My Teamwork Office Edition						
	OmniPCX Office R3.1/R4.x	OmniPCX Office R5.x	OmniPCX Office R6.0	OmniPCX Office R6.1/R7.x	OmniPCX Office R8.x/R9.x	comment
My Teamwork R5.0	Not supported	Not supported	Not supported	Y	Y	No longer supported
My Teamwork R6.0	Not supported	Not supported	Not supported	Y	Y	No longer supported
My Teamwork R6.1	Not supported	Not supported	Not supported	Y	Y	No longer supported
My Teamwork R6.5 & 6.7	Not supported	Not supported	Not supported	Not tested	Not tested	

Note: My Teamwork 6.1 is the last version compatible with OmniPCX Office

OS Server compatibility

My Teamwork Office				
My Teamwork Office Edition				
	Windows Server 2000/2003	Windows XP	Windows Vista	Linux Red Hat
My Teamwork R5.0	N	N	N	Linux Red Hat 9.0
My Teamwork R6.x	N	N	N	Linux Red Hat 9.0

Notes:

- (*) Linux is delivered with My Teamwork Office

Extended Communication Server (phased-out from Dec 2012) (End of life from Dec 2013)

OmniPCX Office compatibility

Extended Communication Server						
ECS server						
	OmniPCX Office R3.1	OmniPCX Office R4.1	OmniPCX Office R5.x-R6.x	OmniPCX Office R7.x	OmniPCX Office R8.x	OmniPCX Office R9.0
Eyebox R3.14	Not supported	Y	Not supported	Not supported	Not supported	Not supported
Eyebox R3.14 + patch	Not supported	Y	Y	Not supported	Not supported	Not supported
Eyebox R4.0	Not supported	Y	Y	Not supported	Not supported	Not supported
ECS R4.0.1	Not supported	Y	Y	Not supported	Not supported	Not supported
ECS R4.1	Not supported	Not supported	Y	Y	Y	Not supported
ECS R4.2 (also R4.2.1)	Not supported	Not supported	Y(*)	Y	Y	Not supported

Notes:

- (*)Virtual nomadic users are not created automatically (to be done by OXO administrator)

Outlook compatibility

Extended Communication Server applications				
Outlook connector				
	Outlook 2000	Outlook 2003	Outlook 2007	Outlook 2010
Eyebox R3.14	Not supported	Not supported	Not supported	Not supported
Eyebox R4.0	N	Y	N	Not supported
ECS R4.0.1	N	Y	N	Not supported
ECS R4.1	N	Y	Y	Not supported
ECS R4.2	N	Y	Y	Not supported

OmniPCX Office Hospitality Link

OmniPCX Office compatibility

OmniPCX Office Hospitality Link				
OHL and Office Link Driver				
	OmniPCX Office R3.1/R4.x	OmniPCX Office R5.x-R7.x-R8.1	OmniPCX Office R8.2	OmniPCX Office R9.x
OHL V1	Y	Not supported	Not supported	Not supported
OLD (OHL V2.3.5)	Not supported	Y	Y (limited to pwd 4digits)	Y (limited to pwd 4digits)
OLD (OHL V2.3.6)	Not supported	Y	Y	Y
OLD (OHL V2.3.8)	Not supported	Y	Y	Y

Notes:

- The compatibility 6 digits password is provided from version 2.3.6

Windows compatibility

OmniPCX Office Hospitality Link							
OHL and Office Link Driver							
	2000 SP4	XP SP3	Vista 32bits	Win 7 32/64	2008 64bR2	Win 8 32/64	Server 2012
OLD (OHL V2)	Yes	Yes	Yes	Yes	Yes	-	-
OLD (OHL V2.3.6)	Yes	Yes	Yes	Yes	Yes	Yes	Yes
OLD (OHL V2.3.8)	Yes	Yes	Yes	Yes	Yes	Yes	Yes

Service Web API XML (phased-out from Dec 2012)

- Already phased-out for standalone server
- Has been phased-out for integrated package in ECS.

OmniVista

4760 OmniPCX Office compatibility (phased-out from Nov 2013)

(End of Life from Nov 2014)

4760 versions	OmniPCX Office R3.1	OmniPCX Office R4.0	OmniPCX Office R4.1	OmniPCX Office R5.0	OmniPCX Office R5.1	OmniPCX Office R6.x	OmniPCX Office R7.x	OmniPCX Office R8.x	OmniPCX Office R9.x
R3.0	Y	Not supported	Not supported	Not supported	Not supported	Not supported	Not supported	Not supported	Not supported
R3.1	Y	Y	Not supported	Not supported	Not supported	Not supported	Not supported	Not supported	Not supported
R3.2	Y	Y	Y	Not supported	Not supported	Not supported	Not supported	Not supported	Not supported
R4.0	Y	Y	Y	Y	Not supported	Not supported	Not supported	Not supported	Not supported
R4.1	Y	Y	Y	Y	Y	Y	Not supported	Not supported	Not supported
R4.2	Y	Y	Y	Y	Y	Y	Y	Not supported	Not supported
R5.0	Y	Y	Y	Y	Y	Y	Y	Not supported	Not supported
R5.1	Y	Y	Y	Y	Y	Y	Y	Y	Not supported
R5.2	Y	Y	Y	Y	Y	Y	Y	Y	Yes

Notes:

- 4760 R5.2 supports Win 2003 (SP2), Win 2008 R2 Standard Edition, Win XP Pro SP3, Win 7 pro 64 bits
- 4760 R5.1 supports Win 2003, Win XP

8770 OmniPCX Office compatibility

8770 versions	OmniPCX Office < R5.X	OmniPCX Office R5.X	OmniPCX Office R6.X	OmniPCX Office R7.X	OmniPCX Office R8.X	OmniPCX Office R9.0-9.1	OmniPCX Office R9.2
R1.1 & R1.2	No	No	No	No	No	No	No
R1.3	No	Yes	Yes	Yes	Yes	Yes	Yes

Notes:

- 8770 R1.3 supports Win 7 Pro (SP1) 64 bits, Win 2008 R2 Standard Edition (SP1)
- Win XP SP3 & Win 7 32/64b for client only
- Browser : IE8 & IE9, Firefox10 & 12

OmniPCX Office RCE Fax

OmniPCX Office compatibility

<i>OmniPCX Office RCE Fax</i>			
	OmniPCX Office R8.0.1	OmniPCX Office R8.x	OmniPCX Office R9.x
RCE Fax 1.0.1	Yes	Yes	Yes
RCE Fax 1.1.0	Yes	Yes	Yes

Notes:

- Version 1.1.0 introduce backup restore & serviceability

Other RCE FAX Server compatibility

Messaging server

- Microsoft Exchange 2010 32 bits/2007/2003
- SMTP mail server

Application interfaces

- Clients: Windows 7/Vista/XP/2003/2000 SP4
- Terminal server Citrix
- Microsoft Office 2010 32 bits/2007/2003 and XP
- Microsoft Word or OpenOffice.org Writer macros
- Web interface: Internet Explorer 6 or higher and Firefox 2.x or higher
 - Service access point (SAP) R/3, 4.5, 4.6

OmniPCX Office & phones compatibility

The following chart provides the terminals (and their options) Phase In/Out status, and the compatibility for each OmniPCX Office software release.

- Phase out Status set to "Out": no longer in the SMB catalog
- Y = Supported by the Release
- N = Not supported by the Release

My IC Phone

My IC Phone				
	OmniPCX Office =< R8.0	OmniPCX Office R8.1	OmniPCX Office R8.2	OmniPCX Office R9.0 - R9.1
8082 My IC Phone 1 (HW - VHE 1)	Not supported	Yes	Yes (upgraded in R200 FW)	Yes (upgraded in R260 FW)
8082 My IC Phone 2 (HW - VHE 2)	Not supported	No	Yes	Yes (upgraded in R260 FW)

Notes:

OmniPCX Office download automatically the FW to the device
 My IC Phone-1 supports R200 & R260 FW binaries (with R200 feature level)
 My IC Phone-2 is compatible from R200.35 onwards
 New BT handset is only supported on My IC Phone R200.35 onwards
 My IC Phone-2 (R260 FW) with OXO R9.0 provides video capabilities (P2P)
 My IC Phone-2 version R260./1.012.3 will be the available version at R9.2 commercial release

My IC Phone Synchronizer Application (for Outlook contact synchronisation) :

See Windows compatibility on BPWS :

- <http://enterprise.alcatel-lucent.com/?product=MyICPhone&page=documents>
- Doc : Omnitouch 8082 MyIC Phone User guide (chapter : MyIC Phone synchronizer)

DeskPhone

80XX DeskPhone				
	OmniPCX Office =< R8.0	OmniPCX Office R8.1	OmniPCX Office R8.2	OmniPCX Office R9.x
8012 Deskphone	No	No	No	Yes
8002 Deskphone	No	No	No	Yes

Notes:

Deskphone version 3.15.5 will be the available version at R9.2 commercial release (this version manage the transfer by on-hook).

SIP terminals white list

Cf AAPP interworking report on AAPP website, menu ‘about the program’ sheet “resources”
<https://applicationpartner.alcatel-lucent.com/aluaapp/content?ID=q00049262>

Wired terminals

Reflexes phones

Reflexes phones							
Terminal Type	Phase out status *	OmniPCX Office R3.1	OmniPCX Office R4.x	OmniPCX Office R5.x	OmniPCX Office R6.x/R7.x	OmniPCX Office R8.x/R9.0	Notes
UA 3G phones First (4004) Premium (4020)	Out	Y	Y	Y	Y	Y	Phase Out 1 st of November, 2006
UA 3G phones Easy (4010) Advanced (4035)	Out	Y	Y	Y	Y	Y	Phase Out end December, 2007

e-Reflexes IP-Phones

e-Reflexes IP phones						
Terminal Type	Phase out status *	OmniPCX Office R3.1	OmniPCX Office R4.x	OmniPCX Office R5.x/R6.x	OmniPCX Office R7.x/R8.x/R9.x	Notes
e-Reflexes IP Easy (4010 IP) Premium (4020 IP) Advanced (4035 IP)	Out	Y	Y	Y	Not supported	Phase Out 31 st of May, 2006

Options and interfaces compatibility with Reflexes phones

Options compatibility with Reflexes phones								
	Option Type	Phase out status	OmniPCX Office R3.1	OmniPCX Office R4.x	OmniPCX Office R5.x	OmniPCX Office R6.x/R7.x	OmniPCX Office R8.x/R9.x	Notes
Reflexes Options	Enabler V24 4093 ASY-CTI-V24	Out	Y	Y	Y	Y	Y	Phase Out 31 st of May, 2006
	Enabler S0 4094 ISW-S0	Out	Y	Y	Y	Y	Y	Phase Out 31 st of May, 2006
	Enabler Analog 4095 AP Analog	Out	Y	Y	Y	Y	Y	Phase Out 31 st of May, 2006
	Enabler 4099 Multi-reflexes hub	Out	Y	Y	Y	Y	Y	Phase Out 31 st of May, 2006
9-Series Options	S0 Interface module	-	Y	Y	Y	Y	Y	
	AP Interface module	-	Y	Y	Y	Y	Y	
	V24/CTI Interface module	-	Y	Y	Y	Y	Y	
	Enabler Multi-UA hub	Out	Y	Y	Y	Y	Y	Phase Out 27 th of June, 2011

Notes:

- The options are not compatible with e-Reflexes IP Phones

Alcatel-Lucent 8 Series IP phones

Alcatel-Lucent 8 series IP Touch phones							
Terminal Type	OmniPCX Office R3.1	OmniPCX Office R4.x	OmniPCX Office R5.0	OmniPCX Office R5.1	OmniPCX Office R6.x/R7.x	OmniPCX Office R8.x/R9.x	Notes
IP Touch 4008	N	N	N	Y	Y	Y	Phase Out 1 st of July, 2008
IP Touch 4018	N	Y	Y	Y	Y	Y	Phase Out 1 st of July, 2008
IP Touch 4028	N	Y	Y	Y	Y	Y	Phase Out 1 st of July, 2008
IP Touch 4038	Y	Y	Y	Y	Y	Y	Phase Out 1 st of July, 2008
IP Touch 4068	Y	Y	Y	Y	Y	Y	Phase Out 1 st of July, 2008
IP Touch 4008EE	N	N	N	Y	Y	Y	-
IP Touch 4018EE	N	N	N	Y	Y	Y	-
IP Touch 4028EE	N	N	N	Y	Y	Y	-
IP Touch 4038EE	N	N	N	Y	Y	Y	-
IP Touch 4068EE	N	N	N	Y	Y	Y	-

Notes:

- The Ice blue terminals have been phased-out on July 2nd 2012.

Alcatel-Lucent 9 Series digital phones

Alcatel-Lucent 9 series digital phones					
Terminal Type	OmniPCX Office R3.1	OmniPCX Office R4.x	OmniPCX Office R5.x	OmniPCX Office R6.x/R7.x	OmniPCX Office R8.x/R9.x
9-Series Digital Set 4019	N	Y	Y	Y	Y
9-Series Digital Set 4029	N	Y	Y	Y	Y
9-Series Digital Set 4039	N	Y	Y	Y	Y

Options compatibility with IP Touch phones and digital phones

Alcatel-Lucent 8 and 9 series options					
Terminal Type	OmniPCX Office R3.1	OmniPCX Office R4.x	OmniPCX Office R5.x	OmniPCX Office R6.x/R7.x	OmniPCX Office R8.x/R9.x
8 & 9 series 10 keys module	Y	Y	Y	Y	Y
8 & 9 series 40 keys module	Y	Y	Y	Y	Y
8 & 9 series Smart display module	N	Y	Y	Y	Y

Notes:

- The Ice blue terminals have been phased-out on July 2nd 2012.

Options and interfaces compatibility with 9-Series digital phones

Options compatibility with 9 Series digital phones								
	Option Type	Phase out status	OmniPCX Office R3.1	OmniPCX Office R4.0	OmniPCX Office R4.1	OmniPCX Office R5.x/R6.x/R7.x	OmniPCX Office R8.x/R9.x	Notes
Reflexes Options	Enabler V24 4093 ASY-CTI-V24	Out	N	N	N	N	N	Phase Out 31 st of May, 2006
	Enabler S0 4094 ISW-S0	Out	N	N	N	N	N	Phase Out 31 st of May, 2006
	Enabler Analog 4095 AP Analog	Out	N	N	N	N	N	Phase Out 31 st of May, 2006
	Enabler 4099 Multi-reflexes hub	Out	N	N	N	N	N	Phase Out 31 st of May, 2006
9-Series Options	S0 Interface module	-	N	N	Y	Y	Y	
	AP Interface module	-	N	N	Y	Y	Y	
	V24/CTI Interface module	-	N	N	Y	Y	Y	
	Enabler Multi-UA hub	Out	N	N	Y	Y	Y	Phase Out 27 th of June, 2011

Notes:

- The options are not compatible with 8-Series IP-Touch

Alcatel-Lucent Bluetooth handset		
Handset type	Terminal Type	Notes
4068 IP-Touch Handset Bluetooth V1.2 3GV27007 AB/AC (FW 18.2)	4068	Phase Out 1 st of July, 2008
4068 EE IP-Touch Handset Bluetooth V1.2 3GV27059 AB/AC (FW 18.4)	4068 EE	-
8082 MyIC Phone Bluetooth Handset 3MG27021 AA	8082	-

Wireless phones compatibility

Alcatel-Lucent DECT terminals

Terminal Type	Phase out status *	OmniPCX Office R3.x/R4.x	OmniPCX Office R5.x/R6.x R7.x/R8.1	OmniPCX Office R8.2/R9.x	Notes
Mobile Reflexes 100	Out	Y	Y	Y	Phase Out 31 st of July, 2007
Mobile Reflexes 200	Out	Y	Y	Y	Phase Out 31 st of July, 2007
Mobile Reflexes 200 Ex	Out	Y	Y	Y	Phase Out 1 st of July, 2008
Mobile Reflexes 300 Ex	Out	Y	Y	Y	Phase Out on May 2013
Alcatel-Lucent 300 DECT	Out	Y	Y	Y	Phased-out on July 2 nd 2012
Alcatel-Lucent 400 DECT	Out	Y	Y	Y	Phased-out on May 2013
Alcatel-Lucent 500 DECT	-	N	From R8.0.1	Y	-
Alcatel-Lucent 500 Ex DECT	-	N	From R8.0.1	Y	-
Alcatel-Lucent 8232 DECT	-	Seen as 200	Seen as 400	Y	-

Notes:

- On IBS AP: see feature list [feature-list-Q4-2013-ed2](#)
- 500DECT version 00.54 has been introduced from version OXO RCE R9.1
- 8232 DECT version 41.81 has been introduced from version OXO RCE R9.1.

Alcatel-Lucent IP-DECT terminals

Terminal Type	Phase out status *	OmniPCX Office < R9.0	OmniPCX Office R9.x		Notes
Alcatel-Lucent 500 DECT		N	Y		
Alcatel-Lucent 500 Ex DECT		N	Y		
Alcatel-Lucent 8232 DECT		N	Y		

Notes:

- On IP-DECT AP: see feature list [feature-list-Q4-2013-ed2](#)

Alcatel-Lucent IP-DECT Access point

IP-Dect Access point	OmniPCX Office < R9.0	OmniPCX Office R9.0-R9.1	OmniPCX Office R9.2		Notes
4080 IP-Dect AP	N	Y	Y		
8340 IP-Dect AP	N	N	Y		

Wireless LAN terminal

Wireless LAN terminal						
Terminal Type	Phase out status *	OmniPCX Office R4.x	OmniPCX Office R5.x	OmniPCX Office R6.x/R7.x	OmniPCX Office R8.x/R9.x	Notes
Mobile IP Touch 300	Out	N	Y	Y	Y	Phase Out 31 st of July, 2007
Mobile IP Touch 600	Out	N	Y	Y	Y	Phase Out 31 st of July, 2007
IP Touch 310	Out	N	Y	Y	Y	Phase Out in 2010
IP Touch 610	Out	N	Y	Y	Y	Phase Out in 2010
Omnitouch 8118	-	N	N	Seen as 310	Y	-
Omnitouch 8128	-	N	N	Seen as 610	Y	-

Appendix : Old generation of Mobile application

One Number service & smart phones compatibility

For new generation of Mobile Application (MyIC Mobile) see page 11

My Cellular Extension (MCE) for Windows Mobile phased out from Nov 2012

MCE from ACE 2.3.x for Smart mobile phone	Firmware	OmniPCX Office R4.x - R6.x	OmniPCX Office R7.x - R8.x	OmniPCX Office R9.x	Device comment
HTC TyTN	WM6.0	N	Y	No longer supported	No longer supported
HTC P3300	WM6.0	N	Y	No longer supported	No longer supported
HTC S710	WM6.0	N	Y	No longer supported	No longer supported
HTC S620	WM6.0	N	Y	No longer supported	No longer supported
HTC TyTN 2	WM6.0	N	Y	No longer supported	No longer supported
HTC S740	WM6.1	N	Y	No longer supported	No longer supported
Samsung GT-C6625	WM6.1	N	Y	No longer supported	No longer supported
Samsung i200	WM6.1	N	Y	No longer supported	No longer supported
Samsung OmniaPro 7330	WM6.5	N	Y	No longer supported	
MCE from MIC R1.1 for PDA	Firmware	OmniPCX Office R4.x - R6.x	OmniPCX Office R7.x - R8.x	OmniPCX Office R9.x	Device comment
HTC Diamond2	WM6.5	N	Y	No longer supported	-
HTC Pro2	WM6.5	N	Y	No longer supported	-
HTC HD2	WM6.5	N	Y	No longer supported	-
HTC Touch2	WM6.5	N	Y	No longer supported	-
Samsung Omnia2	WM6.5	N	Y	No longer supported	

My Cellular Extension for Nokia e-Series (MCE) phased out from nov 2012

	NCC / Symbian supported devices					
Smart mobile phone	NCC Release R2.1	NCC Release R2.2.X	OmniPCX Office R4.x - R6.x	OmniPCX Office R7.x - R8.x	OmniPCX Office R9.x	Device comment
Nokia E50	Yes	N	N	Y	No longer supported	No longer supported
Nokia E51	Yes	Yes	N	Y	No longer supported	-
Nokia E60	Yes	N	N	Y	No longer supported	No longer supported
Nokia E61	Yes	N	N	Y	No longer supported	No longer supported
Nokia E61i	Yes	N	N	Y	No longer supported	No longer supported
Nokia E63	Yes	Yes	N	Y	No longer supported	-
Nokia E65	Yes	N	N	Y	No longer supported	No longer supported
Nokia E66	Yes	Yes	N	Y	No longer supported	-
Nokia E71	Yes	Yes	N	Y	No longer supported	-
Nokia E75	N	Yes	N	Y	No longer supported	-
Nokia E90	Yes	Yes	N	Y	No longer supported	No longer supported
Nokia E52	N	Yes	N	Y	No longer supported	-
Nokia E55	Yes	Yes	N	Y	No longer supported	-
Nokia E72	Yes	Yes	N	Y	No longer supported	-
Nokia E5	Yes	Yes	N	Y	No longer supported	-

NCC Release 2.3.X

	NCC / Symbian supported devices					
Smart mobile phone	NCC Release < R2.3.X	NCC Release R2.3.X	OmniPCX Office R4.x - R6.x	OmniPCX Office R7.x - R8.x	OmniPCX Office R9.x	Device comment
Nokia C7-00	N	Yes	N	Y	No longer supported	-
Nokia N8-00	N	Yes	N	Y	No longer supported	-
Nokia C6-01	N	Yes	N	Y	No longer supported	-
Nokia E6-00	N	Yes	N	Y	No longer supported	-
Nokia E7-00	N	Yes	N	Y	No longer supported	-

www.alcatel-lucent.com