



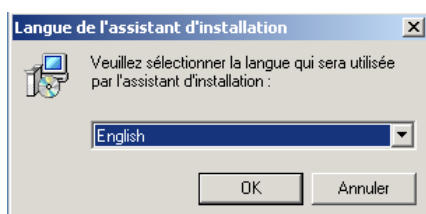
Link Pop Up

Quick User Guide

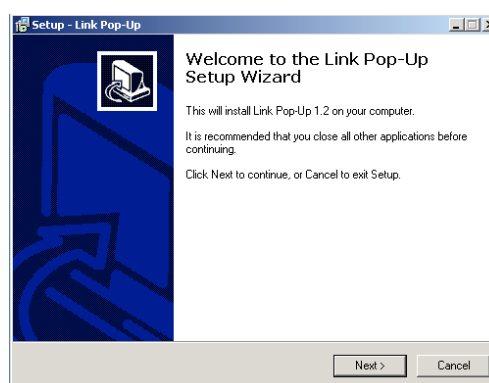
1. Installation

We recommend that you use the latest version of the software. The latest version of the Link PopUp is available at : <http://www.linkcom.fr>.

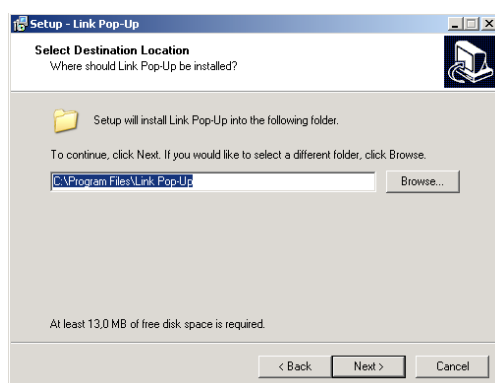
Execute LinkPop-Up.x.exe to launch the software installation.



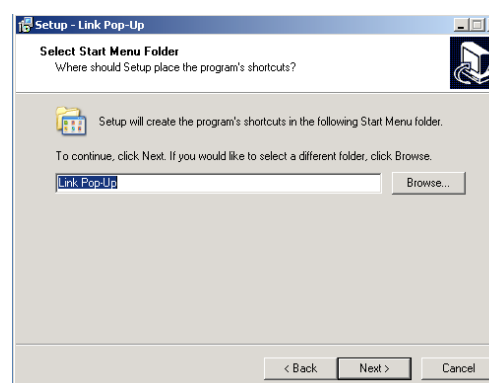
click on OK



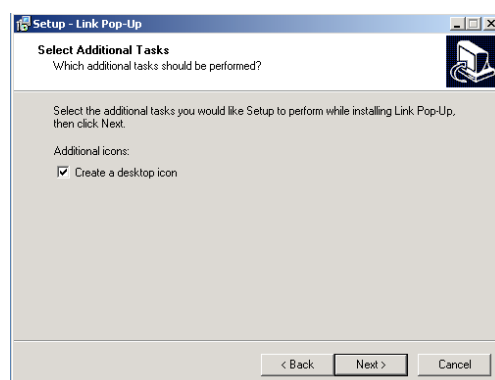
Click on next



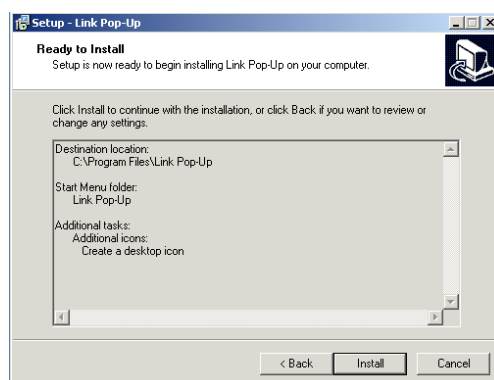
Click on Next



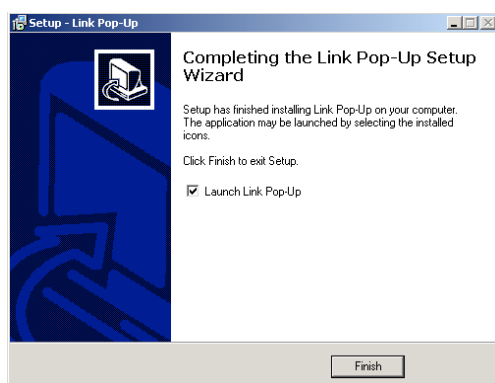
Click on Next



Click on Next



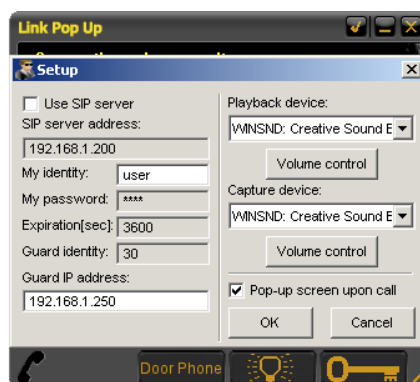
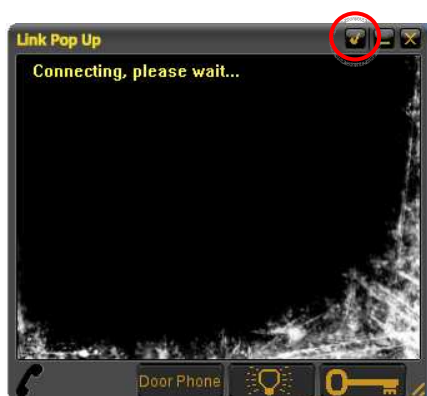
Click on Install



Click on Finish

2. Setting

After starting the Link PopUp, click on setting bouton :



2.1 SIP Serveur or P2P mode :

With SIP Server mode, Link PopUp becomes a SIP softphone : It is registered on IPBX. With P2P mode, the Link PopUp is not registered on IPBX, it is connected in standalone on the DoorPhone.

2.2. Parameters description :


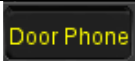


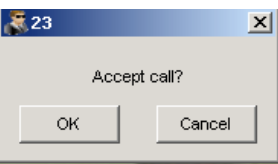
parameters	descriptions
User SIP server	Enable for sip server mode, disable for P2P mode
Sip server address	IPBX hostname or IP address (SIP Server mode only)
My identity	SIP username (SIP Server mode only)
My password	SIP password (SIP Server mode only)
Expiration (sec)	SIP expiration time (SIP Server mode only)
Guard identity	SIP DoorPhone Number or username (SIP Server mode only)
Guard IP address	DoorPhone IP address
Playback device	Choose the output audio device
Capture device	Choose the input audio device
Volume control	Open the Windows volume control
Pop-up screen upon call :	Enable for open the Link PopUp automaticly when that someone push the bouton DoorPhone.



3. Features



When the Link PopUp is open, you can see the image from camera.

Features	Description
	illuminates when the DoorPhone calling
	Call the DoorPhone
	Click for activate the relay 1
	Click for activate the relay 2
	When the Link PopUp receives a call from DoorPhone, click on OK for accept the call.